

Why 10ZiG & Nutanix?

Hardware with Power, Speed, and Performance

For 17+ years, 10ZiG Technology has been an industry-leading Thin & Zero Client Endpoint provider for VDI & Cloud. Where 10ZiG differs from others is that we are solely focused on Thin & Zero Client Endpoints, which makes us Specialists. Our promise is that we make our product fit into the customer's computing environment and not the other way around. The 10ZiG range of x86 hardware covers task-user to power-user, dual to quad screen, is TAA compliant, and comes equipped with quality-performing Intel and AMD processors. DisplayPorts, HDMI, Gigabit ethernet, Fiber (SFP ready), and Dual Band Wireless are just a few of the options that come with devices that are readily available, U.S.-based, and guaranteed. 10ZiG performance hardware is designed from the ground up for ever-changing user experience demands including Nutanix Frame.

Seamless Integration & Optimized User Experience

10ZiG PeakOS and Windows 10 IoT Thin Clients are validated as Nutanix Frame Ready. Powerful, yet energy-efficient, 10ZiG Thin Clients provide an optimal user experience when accessing Frame-powered apps and desktops, either through a browser or via the Frame App. Nutanix Frame is an industry-leading hybrid and multi-cloud Desktop as a Service (DaaS) solution that enables enterprises to deliver virtual apps and desktops hosted in public cloud (AWS, Microsoft Azure, and Google Cloud Platform) and on-premises on Nutanix AHV – all managed from a single control plane.

Choosing your Public Cloud Account for Frame to Manage:

Add a Cloud Account

Select Cloud Provider

AWS Azure Google

Name
10zig.com

Connect to AWS
In order to deploy Frame to your AWS account, you need to prepare it so that the Frame application has all necessary permissions.

- 1 Enter your Account ID
You can find your Account ID in My Account in the AWS cloud console
Cloud Account ID
"1111-2222-3333" or "111122223333"
- 2 Prepare your AWS Account
Run the Cloud Formation Template using the cloud console
[Open AWS Console](#)
- 3 Verify connection status
After you successfully run the Cloud Formation Template verify the connection
[Verify Connection](#)

Select data centers
 All supported regions

[Cancel](#) [Add Account](#)

AWS location of Frame Managed Cloud Account:

Nutanix Frame + secure connection to console.nutanix.com

Frame View History Help

10zig

Summary

Sandbox

Utility Servers

Launchpads

Users

Capacity

Analytics

Audit Trail

Notification Center

Settings

Status

Documentation

Support

2.98.2

Account details

Name: 10zig

Organization: 10zig

Cloud provider: AWS

Cloud account: Nutanix Frame

Datacenter: London

Vendor ID: 39817

Status: [Air 4GB](#)

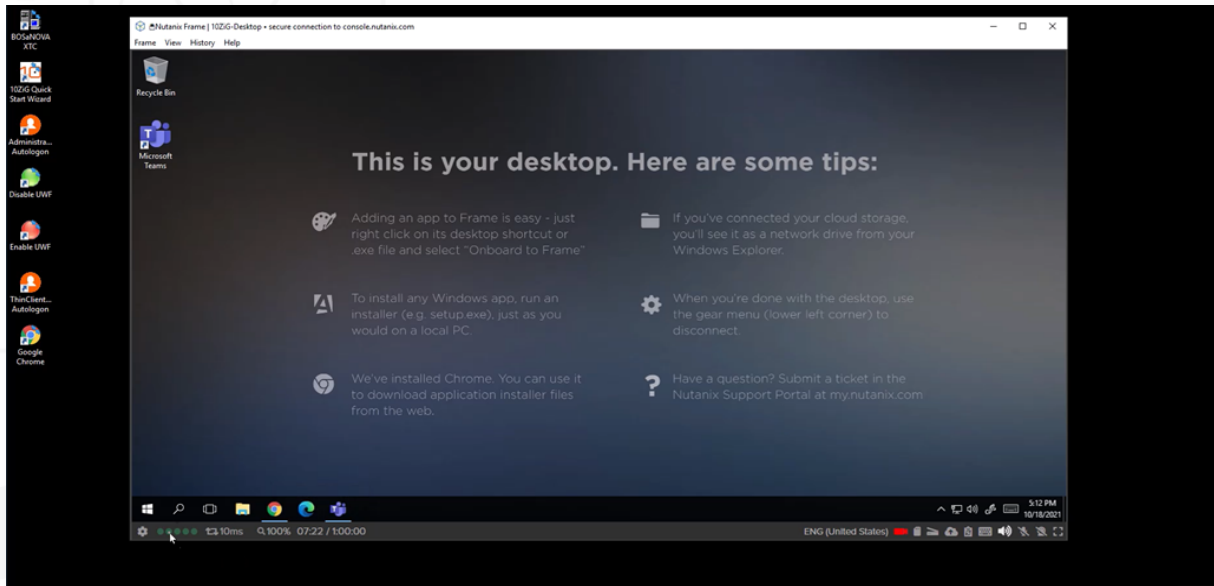
Active Sessions

Search sessions

Session ID	User	Instance Type	Start Time
...	Jason Hudson	Ar 4GB	7 minutes ago

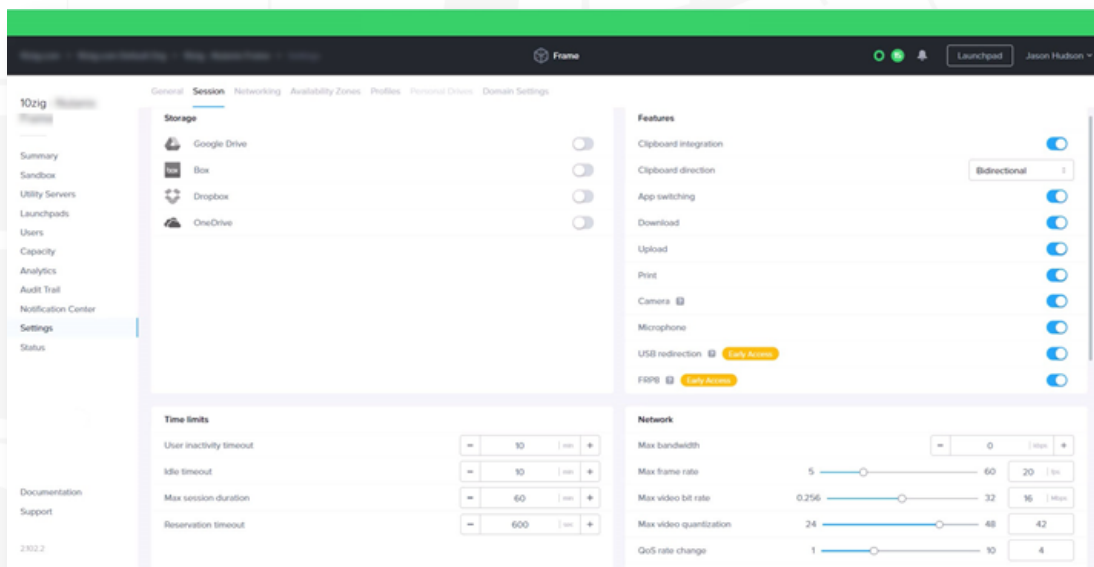
You can run the “Frame App” with the native application installed on your 10ZiG device or through an HTML5 enabled browser, with both platforms offering an extremely rich and powerful feature set. Even the HTML5 browser supports multi-monitor mode if you’re using the Google Chrome web browser.

Frame App running the AWS desktop on the 10ZiG 6010q Thin Client:



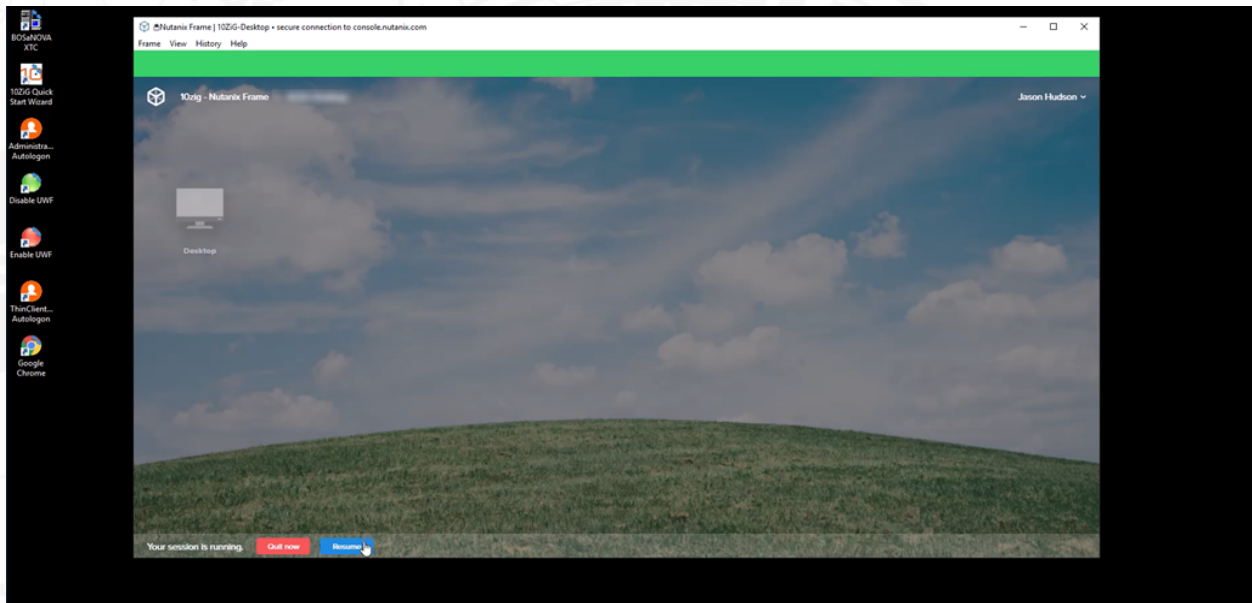
Not only is Frame a delivery service for your desktops with a very useful portal, but it also has the ability to manage your hyper-converged Frame infrastructure from within the application, using both the browser and Frame App. For example, you can create instance types for your users, manage their capacity, and even modify specific settings to enhance end-user experiences. However, if your end user needs to carry out work that requires a more powerful desktop, for CAD or media publishing of audio and video, then it's simply a case of adding a new instance of a more powerful cloud desktop, setting its capacity, starting it up, and within minutes - your team is ready to roll.

Configuring session settings ready for your Frame App:



The Frame environment allows you to setup application and desktop launchpads too, and even attach cloud-based storage accounts that can be passed through to and appear inside your virtual desktops. If your users are inside the Frame application on the physical 10ZiG endpoints, they have the ability to switch between desktops and applications all within the single Frame portal window, meaning that all control stays inside the same window as well.

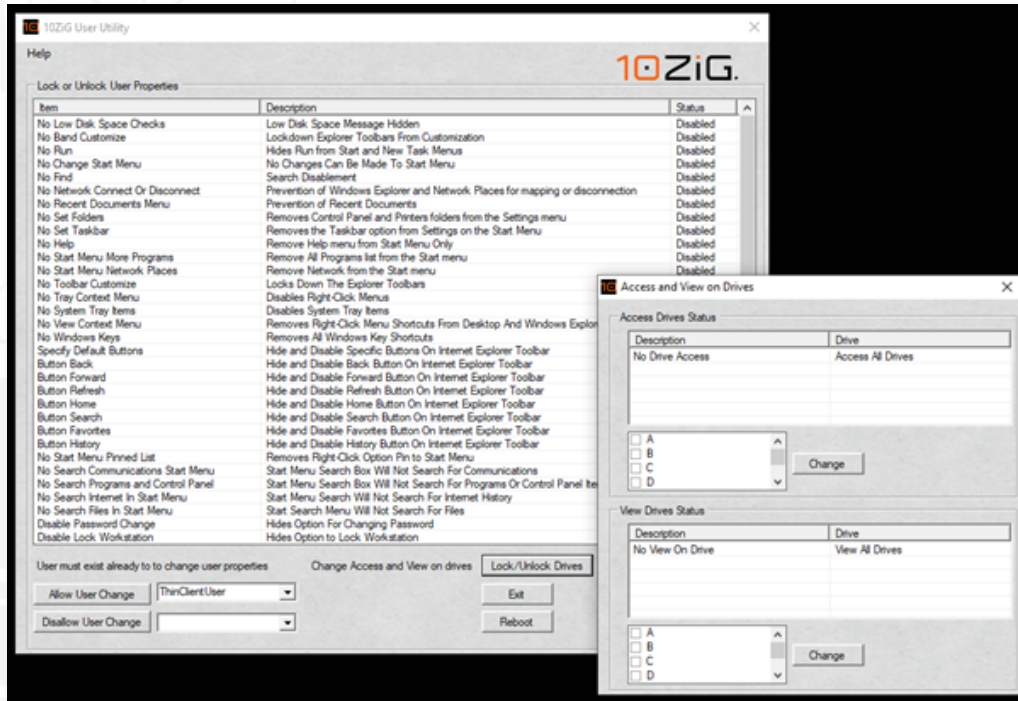
Inside the Frame App, viewing the Launchpad “10ZiG-Desktop” running on the 10ZiG Windows 10 IoT 6010q device:



Custom Windows 10 IoT-Based Thin Client & Utilities

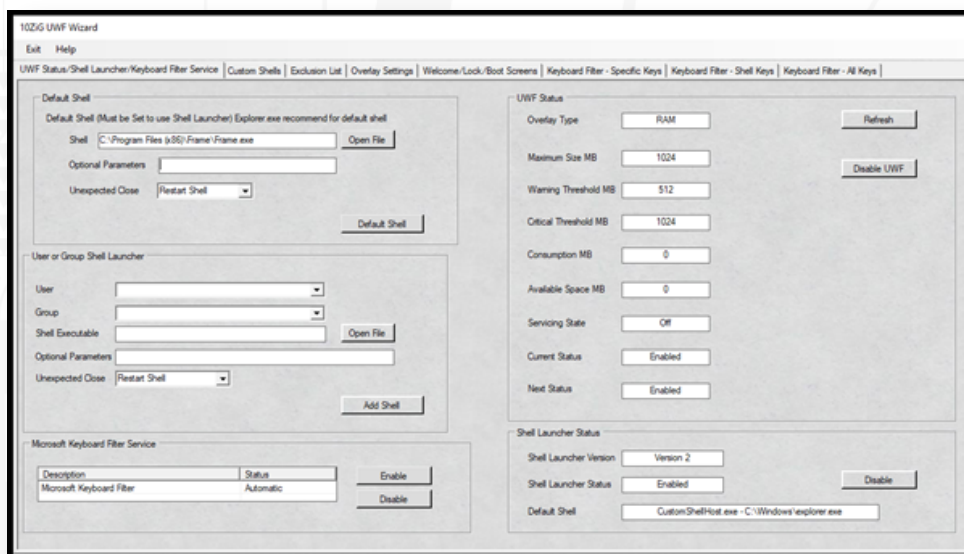
10ZiG Windows 10 IoT Clients come with several very powerful utilities that enable you to customize your Thin Clients to suit your needs and specific business requirements. The 10ZiG User Utility gives you the power to manage your device at a more granular level and either lock or unlock specific settings of the 10ZiG Windows 10 IoT Client. It is useful for work from home scenarios, where more flexibility is required such as accessing WIFI settings and or printers amongst other user-based settings typically restricted in a corporate environment.

10ZiG User Utility settings with drive access permissions:



The 10ZiG UWF Wizard gives you the ability to create a more secure kiosk-based environment for your 10ZiG Windows IoT Clients. The UWF Wizard can create custom shells and give you, for example, the ability to set your 10ZiG Windows 10 IoT Clients to run exclusively a single application at login, such as the Nutanix Frame App. The UWF Wizard can also restrict access to the file system and registry to protect OS and/or application-specific content from being accidentally removed or overwritten.

10ZiG UWF Wizard setting up a single application shell:



Easy-To-Use Management via “The 10ZiG Manager™”

Free centralized management via The 10ZiG Manager™ - included free of charge with no user or device limit, unlike others that charge a license fee and ongoing support costs. The 10ZiG Manager provides centralized ways for automatic configuration, management via Cloud, LAN or WAN, scheduling of tasks, shadowing, and even reporting from all 10ZiG PeakOS™ & Windows based Thin & NOS™ (Zero) Client devices for traditional managed networks.

Customer Service Like No Other

Always a front-runner in many VDI advances, 10ZiG is able to quickly turn around updates and provide customers with quick releases of new versions of protocol updates. 10ZiG offers Windows customization, image preloading, custom development, and plenty more, providing an unmatched level of personalized service. Our no-obligation, flexible test device FREE DEMO program includes personalized follow-up. Pre-and-post Sales & Tech Support availability keep us cutting-edge. Support and firmware are also available for the life of the product - a truly valuable benefit you won't find anywhere else.

Advance Warranty Without Hassle

10ZiG includes an industry-leading, unrivaled default product warranty of 3 Years Advanced Replacement. We guarantee and back our products. This includes quick turnarounds of any replacement device needed, and a prepaid return shipping label included - saving both time and money for customers. We like to make things easy and efficient. If your endpoint provider is not making a difference, 10ZiG Technology can!

10ZiG Corporate Offices

United States Headquarters

23309 N. 17th Dr. #100
Phoenix, AZ 85027 USA

P: (623) 516-0029

F: (623) 516-8697

Sales:

P: (866) 865-5250

info@10ZiG.com

Support:

P: (866) 865-5250

support@10ZiG.com

UK (EMEA) Headquarters

7 Highcliffe Road

Leicester

LE5 1TY

UK

P: +44 (0)116 2148650

F: +44 (0)116 2148651

Sales:

P: +44 (0)116 2148660

info@10ZiG.eu

Support:

P: +44 (0)116 2148661

support@10ZiG.eu



10ZiG IN-OFFICE

REQUEST A FREE DEMO OVER
ON OUR WEBSITE 10ZiG.COM



10ZiG BY REMOTE

REQUEST A FREE DEMO OVER
ON OUR WEBSITE 10ZiG.COM

10ZiG

©2021 10ZiG Technology. All Rights Reserved

NUTANIX